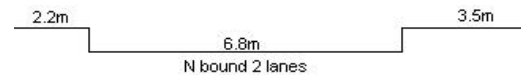
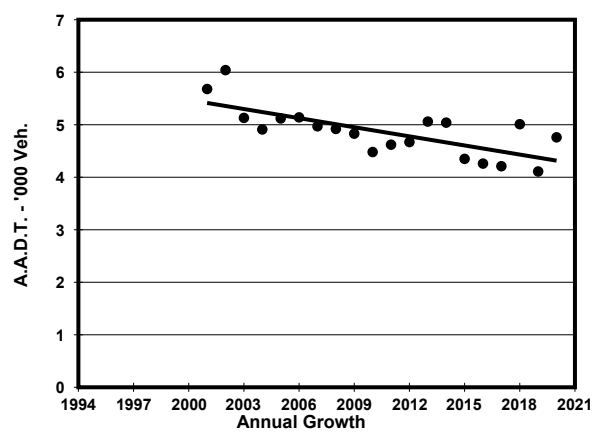
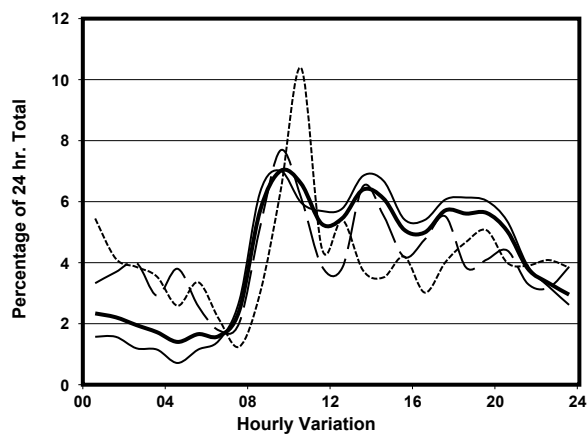
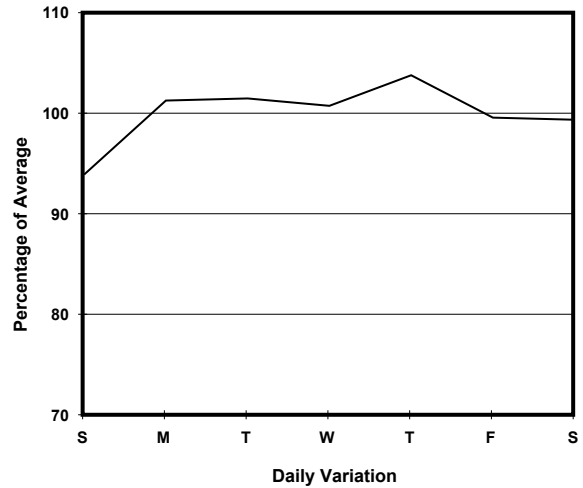
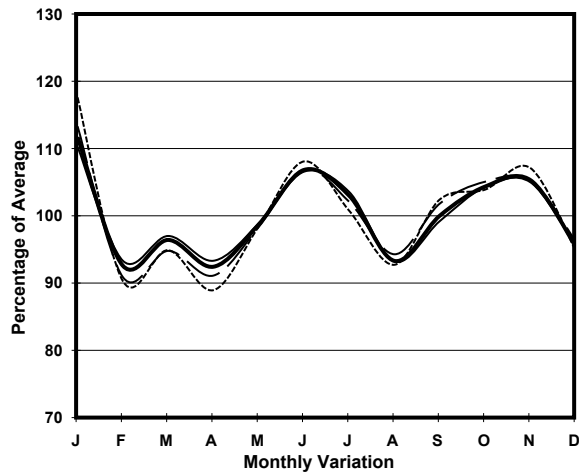


YEAR 2020
 COVERAGE (B) STATION 2210
 ROAD NETWORK MAJOR
 ROAD TYPE DISTRICT DISTRIBUTOR

LINK WYNDHAM ST (from QUEEN'S RD C to LOWER ALBERT RD)



1. TRAFFIC FLOW VARIATION AND GROWTH



— All day — Mon.- Fri. Sat. - - - - - Sun.

2. TRAFFIC CHARACTERISTICS (BY DIRECTION)

Parameter	All - Day	Mon. - Fri.	Sat.	Sun.
NORTH BOUND				
A.A.D.T.	4760	4840	4730	4490
R 12 / 24 - %	66.3	70.1	59.1	54
R 16 / 24 - %	84.2	88.6	74.1	71.1
AM Peak Hour	0900-1000	0900-1000	0900-1000	0900-1000
One-way flow at AM peak hour	330	340	360	290
T - % (AM)	-	1.3	-	-
PM Peak Hour	1700-1800	1800-1900	1700-1800	1800-1900
One-way flow at PM peak hour	270	300	260	210
T - % (PM)	-	-	-	-
Prop.of commercial vehicles - 16 hr.	-	0.5	-	-
 A.A.D.T.	-	-	-	-
R 12 / 24 - %	-	-	-	-
R 16 / 24 - %	-	-	-	-
AM Peak Hour	-	-	-	-
One-way flow at AM peak hour	-	-	-	-
T - % (AM)	-	-	-	-
PM Peak Hour	-	-	-	-
One-way flow at PM peak hour	-	-	-	-
T - % (PM)	-	-	-	-
Prop.of commercial vehicles - 16 hr.	-	-	-	-

3. OTHER INFORMATION AND COMMENT

Coverage (B) Station 2210
Year 2020

4. Vehicle classification and occupancy - Monday to Friday

Time		Class of vehicle									
		Motor Cycle	Private Car	Taxi	Private LB	PLB	Goods veh.		Non Fr. Bus	Fr. Bus	
							Light	M & H		SD	DD
0700-0800	Pro	0.0	24.0	44.0	0.0	0.0	32.0	0.0	0.0	0.0	0.0
	Ocp	0.0	1.3	1.5	0.0	0.0	1.1	0.0	0.0	0.0	0.0
0800-0900	Pro	8.3	39.6	47.9	0.0	0.0	4.2	0.0	0.0	0.0	0.0
	Ocp	1.0	1.3	2.0	0.0	0.0	1.5	0.0	0.0	0.0	0.0
0900-1000 Peak hour	Pro	5.3	45.3	40.0	0.0	0.0	8.0	1.3	0.0	0.0	0.0
	Ocp	1.0	2.0	2.1	0.0	0.0	1.3	1.0	0.0	0.0	0.0
1000-1100	Pro	7.6	53.0	27.3	0.0	0.0	12.1	0.0	0.0	0.0	0.0
	Ocp	1.0	1.4	2.1	0.0	0.0	2.6	0.0	0.0	0.0	0.0
1100-1200	Pro	17.4	55.1	18.8	0.0	0.0	8.7	0.0	0.0	0.0	0.0
	Ocp	1.0	1.6	1.5	0.0	0.0	1.7	0.0	0.0	0.0	0.0
1200-1300	Pro	16.0	54.0	24.0	0.0	0.0	6.0	0.0	0.0	0.0	0.0
	Ocp	1.0	1.3	1.8	0.0	0.0	1.7	0.0	0.0	0.0	0.0
1300-1400	Pro	8.2	50.8	27.9	0.0	0.0	11.5	1.6	0.0	0.0	0.0
	Ocp	1.0	1.2	1.9	0.0	0.0	1.6	1.0	0.0	0.0	0.0
1400-1500	Pro	3.8	58.5	20.8	0.0	0.0	17.0	0.0	0.0	0.0	0.0
	Ocp	1.0	1.4	1.8	0.0	0.0	1.4	0.0	0.0	0.0	0.0
1500-1600	Pro	12.7	49.2	20.6	0.0	0.0	17.5	0.0	0.0	0.0	0.0
	Ocp	1.0	1.5	1.7	0.0	0.0	1.5	0.0	0.0	0.0	0.0
1600-1700	Pro	14.8	57.4	18.0	0.0	0.0	9.8	0.0	0.0	0.0	0.0
	Ocp	1.1	1.4	1.6	0.0	0.0	1.5	0.0	0.0	0.0	0.0
1700-1800	Pro	12.9	44.7	38.8	0.0	0.0	3.5	0.0	0.0	0.0	0.0
	Ocp	1.1	1.2	1.3	0.0	0.0	1.3	0.0	0.0	0.0	0.0
1800-1900	Pro	15.5	57.1	23.8	0.0	0.0	3.6	0.0	0.0	0.0	0.0
	Ocp	1.1	1.3	1.4	0.0	0.0	2.0	0.0	0.0	0.0	0.0
1900-2000	Pro	4.1	50.7	43.8	0.0	0.0	1.4	0.0	0.0	0.0	0.0
	Ocp	1.0	1.2	1.5	0.0	0.0	2.0	0.0	0.0	0.0	0.0
2000-2100	Pro	11.1	25.4	57.1	0.0	0.0	1.6	3.2	1.6	0.0	0.0
	Ocp	1.0	1.8	1.3	0.0	0.0	1.0	1.5	1.0	0.0	0.0
2100-2200	Pro	8.3	38.3	50.0	3.3	0.0	0.0	0.0	0.0	0.0	0.0
	Ocp	1.0	1.7	1.2	5.5	0.0	0.0	0.0	0.0	0.0	0.0
2200-2300	Pro	6.1	21.2	66.7	0.0	0.0	6.1	0.0	0.0	0.0	0.0
	Ocp	1.0	1.3	1.3	0.0	0.0	1.5	0.0	0.0	0.0	0.0
16 hours	Pro	10.1	47.1	34.3	0.2	0.0	7.8	0.4	0.1	0.0	0.0
	Ocp	1.0	1.4	1.6	5.5	0.0	1.6	1.3	1.0	0.0	0.0

Legend: Pro. Proportion of vehicles in % (Sum may not add up to 100% due to figure rounding)*

Ocp. Average occupancy of vehicles including both driver and passengers*

M&H Medium and Heavy

* All traffic data are collected from combined bounds